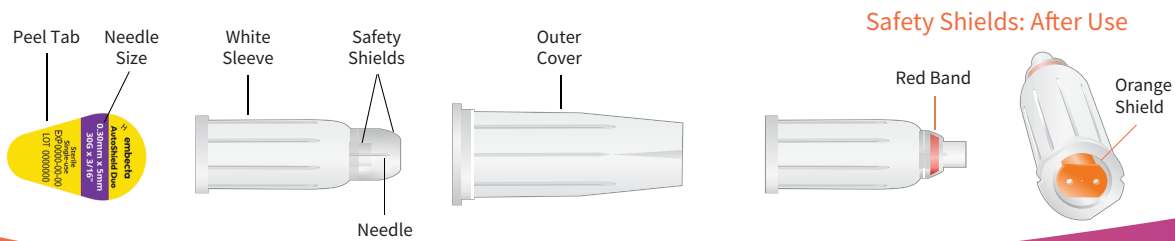
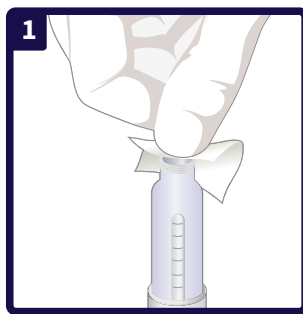


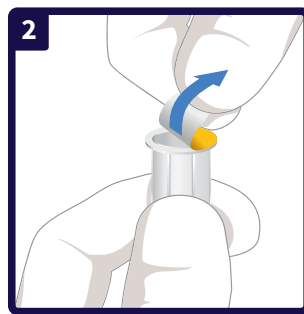
# embecta AutoShield Duo™ Safety Pen Needle with Dual Automatic Protective Shields



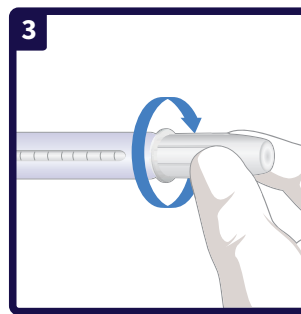
## How to inject insulin with AutoShield Duo™ 5mm Safety Pen Needle



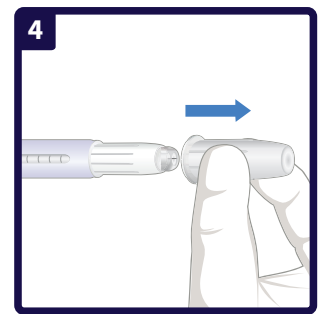
Remove the pen cap and wipe the rubber seal with an alcohol swab.



Pull the peel tab off the pen needle.



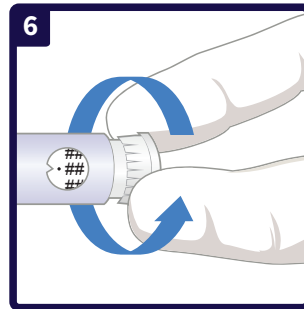
Holding the outer cover, screw the pen needle straight onto the pen.



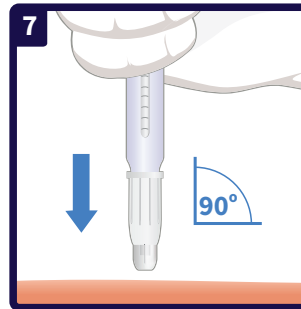
Remove the outer cover.



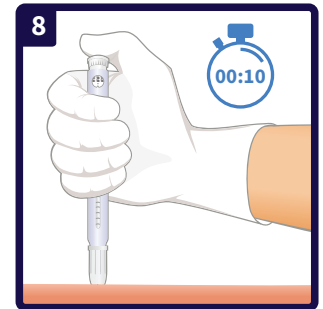
Prime the pen to ensure the needle is open and working.<sup>†</sup>



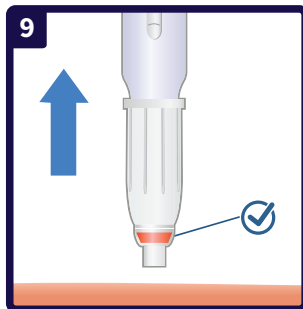
Dial the prescribed dose.



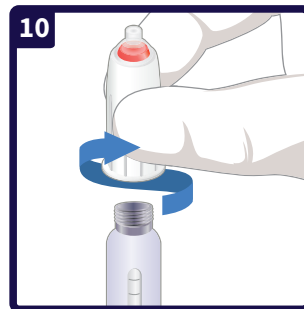
Inject into the skin at a 90-degree angle without a skinfold.<sup>‡</sup>



Push the dose button; leave the needle in the skin for up to 10 seconds.<sup>‡</sup>



Withdraw the needle from the skin; a red indicator band appears inside the clear safety shield.



Hold the white sleeve of the pen needle and twist it off.



The pen connection end of the needle is now protected with an orange shield.



Dispose of the pen needle in a sharps container.

**Learn more about AutoShield Duo™ Safety Pen Needles at [embecta.com/ca/en-ca/hcp/Safety/autoshield-duo](https://embecta.com/ca/en-ca/hcp/Safety/autoshield-duo)**



<sup>†</sup> Priming should be completed in accordance with the steps recommended by the pen manufacturer.

<sup>‡</sup> Patients 6 years old and younger as well as very thin adults may require a pinch-up.

**Reference:** 1. Frid AH, et al. New insulin delivery recommendations. *Mayo Clin Proc.* 2016;91(9):1231-1255.

embecta and the embecta logo are trademarks of Embecta Corp.  
© 2025 Embecta Corp. All rights reserved. EMB-05977

